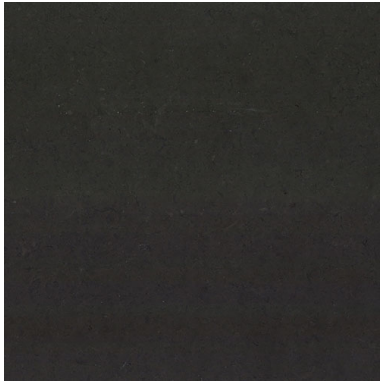


## JUNIPER ASH (H) 1 1/4" SLAB *Stone, Limestone*



PART NUMBER  
LS2146-SL54H0

PROFILE  
SLAB

AVAILABILITY  
REGULAR STOCK

THICKNESS  
1-1/4"

ORIGIN  
Egypt

### NOTES

Due to the inherent characteristics of natural stone, there may be variations in color, movement and texture from lot to lot.

### APPLICATION AREA

TRAFFIC	EXTERIOR	POOL	BACKSPLASH	FIREPLACE SURROUND	COUNTERTOP	INTERIOR
Standard Commercial	Wall and Floor, Including Freeze/Thaw	No	Yes	Yes	Yes	Wall and Floor
SHOWER						

Wall and Floor;  
Including Steam

The performance of surface covering products often depends on installation, environmental, and usage factors unique to each project. AKDO is not responsible for any effects that may be caused to products due to installation, wear from use, or exposure to environmental factors including but not limited to: hard water, chemicals, heat, flame, smoke, dirt or other substances. It is your responsibility to assess the project to determine if the product you are selecting is appropriate considering the unique characteristics of your installation, and to apply appropriate, high quality sealers when necessary. Please consult your installer for more information.

### TECHNICAL DATA

#### FEATURES & STANDARD

DCOF - ANSI A.137.1

#### SPECIFICATION

Due to the natural characteristics and variation in natural stone, slip resistance will vary. Such factors are dependent on lots, finish and the topical sealant applied. There is currently no standard industry test with the ability to measure the exact slip resistance.

In order to reduce the slipperiness of stone surfaces, AKDO suggests selecting a Non-Polished finish such as Honed, Sandblasted, or Textured stone, or choosing a mosaic, as the grout joints in the stone result in an increase of friction.