

# AKDOLAM

The image displays a variety of material samples. At the top, a large rectangular slab of white marble with grey and pinkish veins is visible. Below it, a horizontal wooden plank is positioned. In the center, a vertical rectangular piece of light-colored, textured stone or wood is shown. To the left of this central piece, a vertical metal component with a series of rectangular perforations is visible. At the bottom, there are several horizontal wooden planks of different shades and textures, including a dark brown one on the left and a light-colored one on the right.

THE LIGHTEST NATURAL STONE



## DISCOVER THE AKDOLAM DIFFERENCE

---

*Akdolam is an innovative solution for creating dramatic, large format natural stone installations in an efficient manner. Using advanced technology, stone slabs are cut into incredibly thin sheets and laminated onto lightweight materials. The resulting product offers a more sustainable, custom approach to design, while maintaining a lower price point.*

Produced by

**AKDO™**  
Far Beyond the Surface





# THE LIGHTEST NATURAL STONE

---

## CUSTOMIZABLE STONE

---

More than 100 stones  
*5 mm thick*



## BACKING OPTIONS

---

- Porcelain
- Glass
- 3D Fiberglass
- Honeycomb



### PORCELAIN

*Backing thickness: 8 or 10 mm*



### 3D FIBERGLASS

*Backing thickness: 15 mm*



### HONEYCOMB

*Backing thickness: 15 or 20 mm*



### GLASS

*Backing thickness: 10 mm*

Final thickness of your AKDOLAM will be determined  
by the specifications of your project.

## BACKINGS

### Honeycomb

This lightweight aluminum honeycomb reduces installation time by 65%

### 3D Fiberglass

This lightweight, three dimensional glass backing can be used for interior architecture purposes, The product is a mere 30% of the weight of a 2 cm marble panel.

### Porcelain

The porcelain-backed AKDOLAM can be used for interior applications such as floor, and wall coverings.

### Glass

Glass backed AKDOLAM can be used for interior applications such as separation walls, shower panels, desks, tables, and backlit applications.





## STONES VARIETIES

---

*AKDO's "brother company", Silkar, owns factories, quarries and ateliers around the world where stone is sourced and processed into a striking variety of finishes and sizes.*



TULIP BLACK



ARABESCATO  
OROBICO



ARTIC BLUE



ARTEMIS WHITE



BELLE VUE



ARTIC BLUE



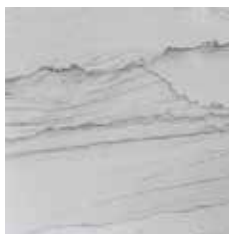
BURLESQUE



CALACATTA



CALACATTA  
CALDIA



WHITE CASCADE



CLOUD WHITE



DARK OLIVE

Not seeing your preferred stone?  
We can source many stones not shown here,  
ask us for details.

## FINISHES

---

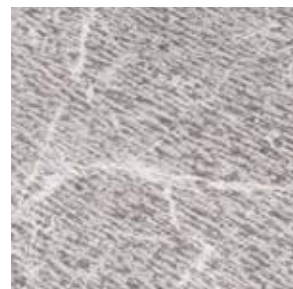
*Explore a variety of surface finishes to add texture and depth to your project.*



POLISHED



SANDBLASTED  
& BRUSHED



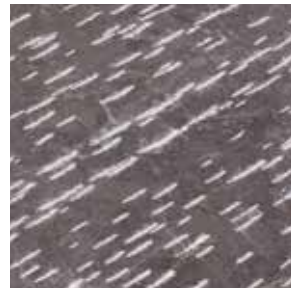
PLOWLINE



HONED



BRUSHED



PICO LINES



GRAINS



VIRGULA

AKDO will inform you about the possible finishes for the stone and backing you select for your project.









## AREAS OF USE

---

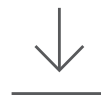
*AKDOLAM can be utilized in the following applications:*

*Surface coverings, aerospace manufacturing, furniture industry, decorative products, ship manufacturing, soffits and spherical surfaces, automotive industry.*



### INTERIOR

*AKDOLAM is ideal interior wall claddings.*



### WALL / FLOOR

*AKDOLAM is ideal for wall, floor and ceiling applications.*



### WET AREAS

*AKDOLAM can be used in wet areas like showers.*

## 3 DIMENSIONAL

---



FULL BULLNOSE



CUSTOM CORNICE



BASE MOLDING

## BENEFITS

---



### EXTRA-LARGE PANELS

*Large format sizes available up to 70.9"x 118.1"*



### VARIETY OF FINISHES

*Various stone surface finishes such as polished, honed, bush-hammered or sandblasted.*



### LIGHTWEIGHT

*From 3.3 lb/sqft*



### REDUCES INSTALLATION TIME

*Installation takes 50% less time.*



### HIGH RESISTANCE TO MOISTURE

*High resistance to moisture.*



### HIGH IMPACT RESISTANCE

*High load-bearing capabilities.*



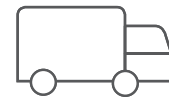
### SUSTAINABLE

*Energy savings due to reduced transportation and installation times.*



### TOTALLY CUSTOMIZABLE

*Choose your stone and backing; custom sizes and patterns available upon request.*



### EASILY TRANSPORTED

*Full containers of the material can be shipped, reducing transportation costs.*







# AKDOLAM

## TECHNICAL FEATURES

	3D FIBERGLASS	HONEYCOMB	PORCELAIN	GLASS
Max. Panel dimensions (cm)	49.2" x 98.4"	70.87" x 118.11"	31.5" x 51.2"	70.87" x 118.11"
Panel Thickness*	.79"	.79"	.51" or .59"	.59"
Outer Surface Natural Stone	5 mm	5 mm	5 mm	5 mm
Core Panel Thickness (mm)	15 mm	15 or 20 mm	8 or 10 mm	10 mm
Installation System	Adhesion	Mechanical / Adhesion	Adhesion	Mechanical
Place of Use	Interiors	Interiors	Interiors / Floor / Wall	Interiors
Weight (lb/sqft)	3.3	3.3 - 4.3	6	7.8
Performance Properties	Flexible	Not Flexible	Not flexible	Not Flexible
Reactions to Fire	-	A2, s1,d0	-	-
Determination of Resistance to Ageing by SO2 Action in the Presence of Humidity	-	0.75% ± 0.25	-	-
Determination of Resistance to Ageing by Thermal Shock	-	Average Mass Loss: 0.02gr. Flexural Strength Difference: -1.53MPa	-	-
Determination of Rupture Energy	-	4.2 ± 0.16 joule	-	-
Determination of Resistance to Aging by Salt Mist	-	0.24 ± 0.05	-	-
Flexural Strength	-	28.76MPa	-	-
ASTM C297 Tensile Strength	-	-	242 psi	-
ASTM C99 Dry Condition Modulus of Rupture	-	-	4240 psi	-
ASTM C99 Dry Condition Modulus of Rupture	-	-	3990 psi	-
ASTM D2247 Water Resistance	-	-	No deleterious effects	-
ASTM C482 Bond Strength	-	-	269 psi	-
ASTME 330 Resistance to Safety Load	-	± 9000 Pa	-	-
AAMA 501.5-07 Thermal Cycling	-	High Temperature 140°F Low Temperature - 40°F	-	-

\* Panel thickness may vary according to the project's needs, and suitability of use.

## AKDO

1435 State Street  
Bridgeport, CT 06605  
1.800.811.2536  
203.336.5199 (o)  
203.336.0603 (f)

## AKDO NYC

22 West 21st Street  
New York, NY 10010  
1.800.811.2536  
212.485.0448 (o)  
212.485.0449 (f)

## AKDO Pacific

3445 Arden Road  
Hayward, CA 94545  
1.888.909.2536  
510.785.2536 (o)  
510.785.0895 (f)

[akdo.com](http://akdo.com)