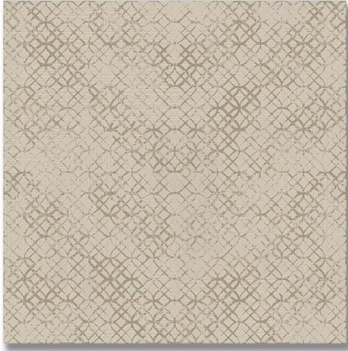


24" X 24" ETRO SOFT BEIGE *Porcelain*



PART NUMBER
PO1988-242400

VARIATION
LOW

THICKNESS
3/8"

NOTES
Available nationwide.

PROFILE
TILE

GROUT JOINT
1/16"

AVAILABILITY
AVAILABLE ON REQUEST

DIMENSIONS
23.64" x 23.64" = 3.875 sqft

Due to the inherent characteristics of porcelain, there may be variations in color, movement and texture from lot to lot.

APPLICATION AREA

WALL	FLOOR	TRAFFIC	EXTERIOR FREEZE/THAW	STEAM SHOWER	WET AREA	POOL	BACKSPLASH	FIREPLACE SURROUND
Yes	Yes	Standard Commercial	Yes	Yes	Yes	Yes	Yes	Yes

The performance of surface covering products often depends on installation, environmental, and usage factors unique to each project. AKDO is not responsible for any effects that may be caused to products due to installation, wear from use, or exposure to environmental factors including but not limited to: hard water, chemicals, heat, flame, smoke, dirt or other substances. It is your responsibility to assess the project to determine if the product you are selecting is appropriate considering the unique characteristics of your installation, and to apply appropriate, high quality sealers when necessary. Please consult your installer for more information.

TECHNICAL DATA

FEATURES & STANDARD	SPECIFICATION	FEATURES & STANDARD	SPECIFICATION
Abrasion Resistance - ISO 10545-7	Class 4 PEI 6.000 GRI	Breaking Strength - ISO 10545-4	> 35N/mm ₂
Chemical Resistance - ISO 10545-13	GA G1A GHA	Bending Resistance - ISO 10545-4	> 35N/mm ₂
Booted Ramp Test - DIN 51130	R9		